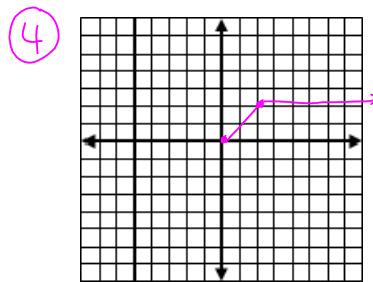
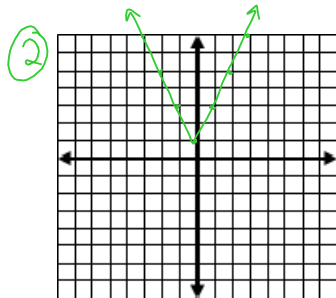


Graphing Piecewise functions ANSWERS



$$\textcircled{6} f(x) = \begin{cases} \frac{1}{2}x + 2 & x < 0 \\ 0 & x = 0 \\ \frac{1}{2}x - 2 & x > 0 \end{cases}$$

$$\textcircled{8} f(x) = \begin{cases} -2x & x < -2 \\ 4 & -2 \leq x \leq 2 \\ 2x & x > 2 \end{cases}$$

2.7 Level A:

2. Vertical Stretch factor of 3
4. Reflection across x-axis and vertical stretch factor of 6
6. Vertical Translation 2 units up, reflection across x-axis, vertical stretch factor 3
8. reflection across x-axis
10. vertical translation 6 units down, vertical stretch by a factor of 2.
12. Horizontal translation 2 units right.
14. $g(x) = x^2$
16. $g(x) = |x/3|$
18. $g(x) = (x-4)^2$